



# Harmes Turner Brown

Cottimore Lane, Walton-On-Thames, Surrey, KT12 2BN



**£595,000 Freehold**

We are delighted to offer this beautifully presented three bedroom extended family semi located in a popular residential road close to local shops and popular schools. Offered for sale with no onward chain, this 1930's home briefly includes a welcoming entrance hallway with larger than average downstairs cloakroom, bay fronted through lounge/dining room with wood flooring and feature fireplace. The property has been skilfully extended to provide a generous size modern kitchen/breakfast room fitted with a designer kitchen including a good range of eye and base level units, a large central cooking island with ample storage below, built in appliances to include AEG oven, hob and extractor, dishwasher and space for fridge/freezer, all complimented with granite work surfaces. On the first floor you will find three bedrooms, the master of which has fitted wardrobes and wood flooring. The modern family bathroom provides a three piece suite including bath with shower over, wash hand basin with vanity unit, low level wc and modern tiling. Externally the large rear garden is mainly laid to lawn with timber decked patio, mature tree and shrub borders and space to the side with pedestrian access to the garage. To the front is a private drive with off street parking and access to the garage. For viewings call our Walton office on 01932 222266.

INDEPENDENT ESTATE AGENTS

[www.htbproperty.com](http://www.htbproperty.com)

SALES • LETTINGS • MANAGEMENT

Walton Branch  
45A High Street  
Walton on Thames  
Surrey KT12 1DH  
01932 222266

[sales@htbproperty.com](mailto:sales@htbproperty.com)  
[lettings@htbproperty.com](mailto:lettings@htbproperty.com)



Registered address: 2 AC Court, Hight Street, Thames Ditton KT7 0SR Registered in England, Number 6433673

Molesey Branch  
45 Walton Road  
East Molesey  
Surrey KT8 0DP  
0208 001 8385

INDEPENDENT ESTATE AGENTS

[www.htbproperty.com](http://www.htbproperty.com)

SALES • LETTINGS • MANAGEMENT

Walton Branch  
45A High Street  
Walton on Thames  
Surrey KT12 1DH  
01932 222266

[sales@htbproperty.com](mailto:sales@htbproperty.com)  
[lettings@htbproperty.com](mailto:lettings@htbproperty.com)

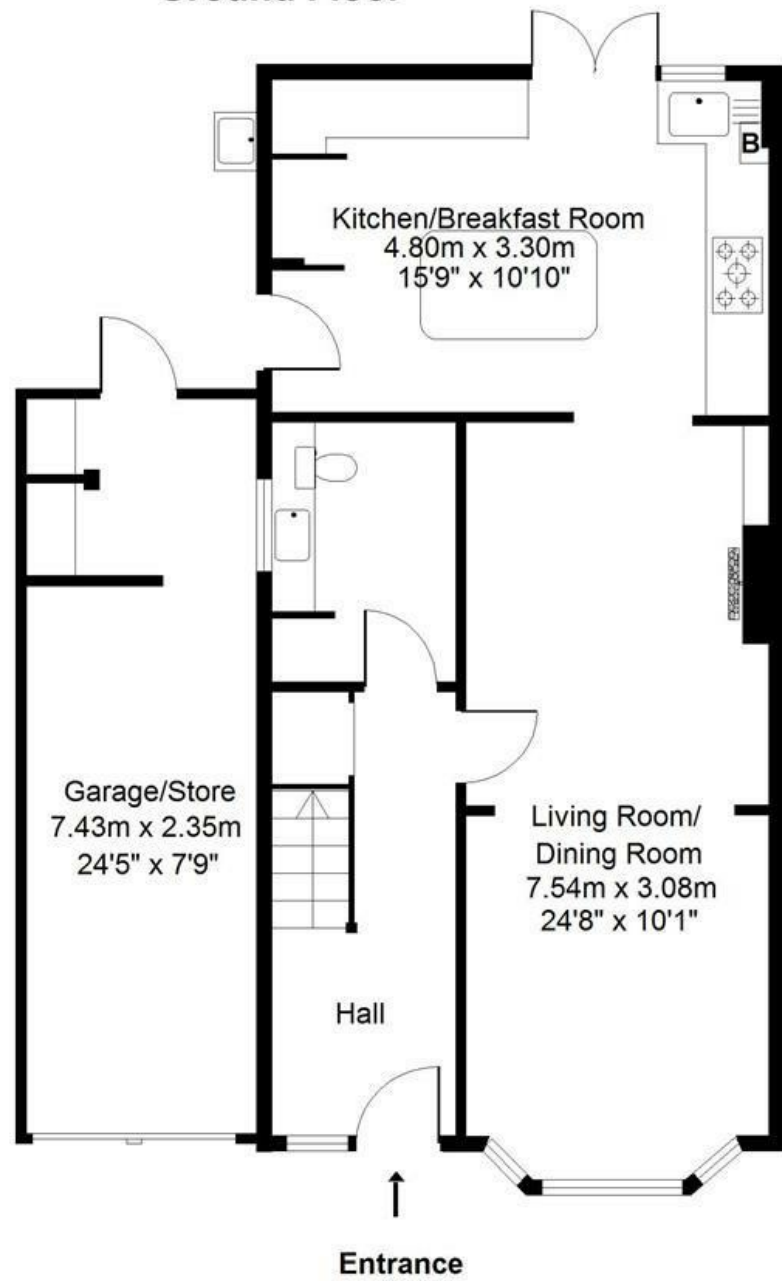


Registered address: 2 AC Court, Hight Street, Thames Ditton KT7 0SR Registered in England, Number 6433673

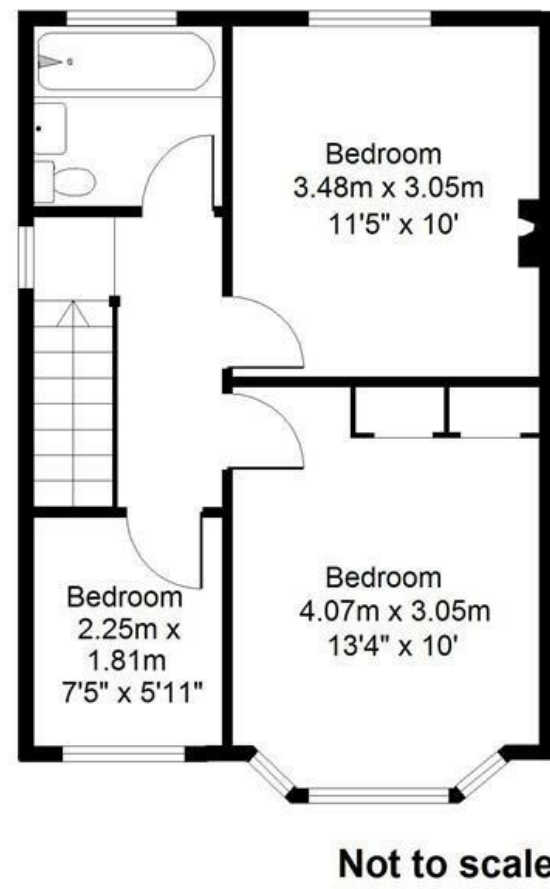
Molesey Branch  
45 Walton Road  
East Molesey  
Surrey KT8 0DP  
0208 001 8385

# Cottimore Lane, Walton-On-Thames, Surrey, KT12 2BN

## Ground Floor



## First Floor



Approximate Gross Internal Floor Area:  
130m sq (1,165sq ft) inc Garage/Store

Whilst every attempt has been made to ensure the accuracy of the floor plan contained here, measurements of doors, windows and rooms are approximate and no responsibility is taken for any error, omission or misstatement. These plans are for representation purposes only as defined by RICS Code of Measuring Practice and should be used as such by any prospective purchaser. Specifically no guarantee is given on total square footage of the property if quoted on this plan. Any figure given is for initial guidance and should not be relied on as a basis of valuation.

- THREE BEDROOMS
- MODERN KITCHEN/BREAKFAST ROOM
- NO ONWARD CHAIN
- POTENTIAL TO EXTEND (STPP)
- EPC:C
- EXTENDED SEMI DETACHED HOME
- GARAGE AND OFF STREET PARKING
- LARGE PRIVATE GARDEN
- DOWNSTAIRS CLOAKROOM
- COUNCIL TAX BAND: E

